



# APX NEXT ACCESSORIES



# PROTECT YOUR **FOCUS** WHEN IT MATTERS MOST

## **APX NEXT**

IN PUBLIC SAFETY, FOCUS IS YOUR GREATEST RESOURCE. MAKE SURE IT'S PROTECTED WITH APX NEXT™.

### **A MASSIVE ADVANCE IN MISSION-CRITICAL VOICE AND DATA**

Your radio is your lifeline. APX NEXT is our next step in advancing it. It's designed to military standards for extreme ruggedness. The touchscreen works with or without gloves—in rain, dirt, and dust. Digital mics and high-power speakers deliver our best audio ever, while SmartConnect keeps you connected even beyond your P25 system. The result is a radio that works when you need it, without pause, distraction or doubt.

### **EFFORTLESS IS ALWAYS IN REACH**

APX NEXT is designed for effortless usability when everything is on the line. Intuitive knobs and buttons are easily distinguished by touch. A mission-critical touchscreen makes it fast and easy to operate your radio. ViQi understands a huge range of natural language voice commands, so you can operate the radio with eyes-up awareness. Every interaction is simple, fast and logical. You stay focused on what matters—your mission and your safety.

### **BRING NEW INTELLIGENCE TO THE POINT OF ENGAGEMENT**

APX NEXT mission-critical apps bring new intelligence to the field. ViQi enables natural language database queries, rapidly giving vital information, and letting dispatchers stay focused on critical situations. And as part of our unique, end-to-end public safety ecosystem, APX NEXT data and operations are secure,, and new capabilities can be seamlessly added as your needs evolve.

### **UPDATE YOUR FLEET IN MINUTES, NOT MONTHS**

APX NEXT gives you back time: a cloud-based provisioning system prepares radios before they arrive. Remote updating keeps radios in the field, with zero touch and zero downtime. MyView Portal provides direct access to subscriptions, warranties and licenses, and a range of services helps you manage your operation. With APX NEXT, your ownership experience is streamlined, so your valuable resources stay focused and ready.



# TABLE OF CONTENTS

EXPAND AND CUSTOMIZE YOUR RADIO'S  
FUNCTIONALITY WITH BEST-IN-CLASS ACCESSORIES.



## ANTENNAS

|          |                   |
|----------|-------------------|
| Stubby   | <a href="#">5</a> |
| All-band | <a href="#">5</a> |

## AUDIO

|                   |                    |
|-------------------|--------------------|
| XV RSM            | <a href="#">7</a>  |
| Earpieces         | <a href="#">10</a> |
| Surveillance Kits | <a href="#">10</a> |

## CARRY

|                           |                    |
|---------------------------|--------------------|
| Hybrid Leather Carry Case | <a href="#">12</a> |
| Carry Attachments         | <a href="#">12</a> |
| Classic Holster           | <a href="#">13</a> |

## ENERGY

|                    |                    |
|--------------------|--------------------|
| IMPRES 2 Batteries | <a href="#">15</a> |
| IMPRES 2 Chargers  | <a href="#">16</a> |



# ANTENNAS

DESIGNED FOR  
WEARABILITY





# ANTENNAS

## DESIGNED FOR WEARABILITY

### DETAILS

Motorola Solutions’ redesigned antennas provide convenience without compromising performance. Shorter, more flexible and compliant conforming to the user in mission critical environments.

- The new 7/800MHz Stubby Antenna (760-870 MHz) delivers great coverage but will not snag on clothing or equipment.
- The new Whip All-band Antenna (V,U,7/800MHz) is fabricated using a new polymer that delivers 40% better flexibility.

### SPECIFICATIONS

|                 | Stubby         | All-band                           |
|-----------------|----------------|------------------------------------|
| Part Number     | AN000296A01    | AN000297A01                        |
| Frequency Range | 760-870 MHz    | 136-174MHz, 380-520MHz, 760-870MHz |
| Length          | 2.6 in (65 mm) | 7.9 in (200 mm)                    |
| Integrated GPS  | No             | No                                 |

### ANTENNA ID BANDS

Colored antenna ID bands are available for easy customization and come in packs of 10.

- 32012144001 Gray
- 32012144002 Yellow
- 32012144003 Green
- 32012144004 Blue
- 32012144005 Purple

**Will the new antennas in APX NEXT (stubby single-band and flexible all-band) work with other APX family radios such as the APX 8000 and APX 6000?**

No. The current APX antennas have the GPS hardware embedded. The APX NEXT antennas do not have GPS hardware because the hardware is located in the radio itself. This means that APX NEXT antennas cannot be used with other models of APX radios.



Stubby

All-band

# AUDIO

HEAR AND BE HEARD  
LIKE NEVER BEFORE





# XV RSM

## HEAR AND BE HEARD LIKE NEVER BEFORE

### DETAILS

The Xtreme Voice (XV) Remote Speaker Microphone is the next generation mission critical RSM designed to deliver the clearest and loudest audio communications. The XV RSM is equipped with our latest technology, including sophisticated noise-reduction techniques, in a sleek, compact package. Instantly access ViQi, your virtual AI assistant, to change radio channels and receive critical information. Create functional short cuts with 3 configurable buttons that are protected against accidental activation. Built as a system, the XV RSM and the APX NEXT radio strengthen the most important thread of your lifeline: ultra-clear voice communications. So no matter where you are or how you speak, you can be confident that, for every message, you'll hear and be heard clearly.

### KEY FEATURES

- Loudest, clearest speaker
- Four digital microphones
- Enhanced windproofing
- New adaptive noise suppression
- Dedicated ViQi button

## EASY ACCESS TO RADIO CONTROLS

### State of Emergency

Activate or deactivate emergency mode from your XV RSM.

### Full Scale Volume Control

Hold the Up/Down lever in the (+) increment or (-) increment position and your APX NEXT radio will ramp the XV RSM speaker loudness to the highest or lowest available volume setting.

### Radio Function Buttons

Configure the one-dot and two-dot buttons to access key radio functionality from your XV RSM.



# EASY ACCESS TO ViQi

ViQi IS YOUR VIRTUAL ASSISTANT, DESIGNED FOR PUBLIC SAFETY. THE THREE-DOT DEDICATED ViQi BUTTON ON YOUR XV RSM ALLOWS YOU TO OPERATE ViQi FROM YOUR SHOULDER.

It's ViQi's job to quickly provide the information you need to stay safe and effective. Checking a driver's license? Just ask her. Need to run a plate? She's on it. She'll even discreetly warn you to move out of earshot if she has important information to share.

She understands natural language voice commands, from changing zone, channel and volume, to getting status checks. All while keeping your hands free and your focus on your surroundings.

Click [here](#) to learn more about ViQi.

## Compact Size

XV RSM Actual Size\*



\* Actual size may not be represented based on viewing media.



# SPECIFICATIONS

## GENERAL

|                                |  |
|--------------------------------|--|
| Part Number                    | PMMN4123                               |
| Dimensions (RSM Head only)     | 3.58 x 2.48 x 1.1 in (91 x 63 x 28 mm) |
| Weight (Total Kit)             | 9.52 oz. (270 g)                       |
| Clip                           | 360° Rotating Clip with D-Ring         |
| Replacement Clip               | NNTN4990                               |
| Color                          | Black                                  |
| Power Source                   | APX NEXT Radio                         |
| Secondary Accessory Interfaces | 3.5 mm Non-threaded                    |
| Intrinsically Safe             | No                                     |

## MICROPHONE

|                    |   |
|--------------------|---|
| Type               | Quad Beam   |
| Sensitivity        | -42dBV Typical                                    |
| Distortion (THD)   | < 5%, Wideband                                    |
| Intelligent Audio  | No  |
| IMPRES™            | Yes   |
| Noise Cancellation | 4 Microphone Adaptive Noise Suppression Algorithm |
| Windporting        | Yes   |

## CONTROLS

|        |                                    |
|--------|------------------------------------|
| Top    | Emergency (Orange)                 |
| Side   | PTT, 2 Programmable (1-dot, 2-dot) |
| Front  | 1 Programmable (3-dot ViQi)        |
| Volume | Up/Down                            |

## SPEAKER

|                    |                 |
|--------------------|-----------------|
| Diameter           | 1.5 in (47 mm)  |
| Rated Output Level | 94dBSPL @ 30 cm |
| Distortion (THD)   | < 15%           |

## CABLE

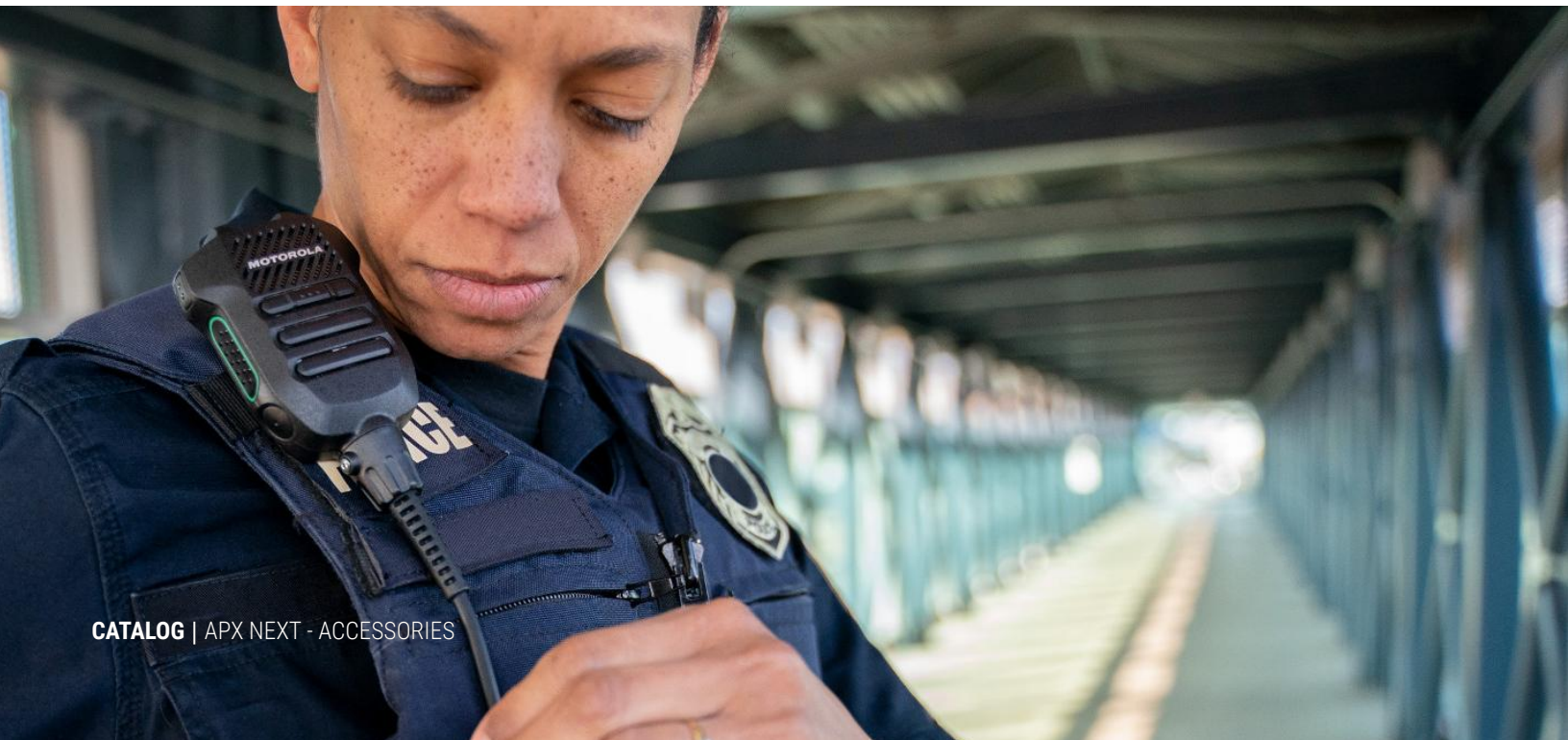
|                   |                               |
|-------------------|-------------------------------|
| Length            | 10 in (254 mm) Coiled Length  |
| Flex Life         | 100k Cycles Minimum           |
| Pull Strength     | 40 lbs (18.14 kg) Minimum     |
| Cable Jacket      | Thermoplastic Elastomer (TPE) |
| Replacement Cable | PMKN4219                      |

## ENVIRONMENTAL

|                       |   |
|-----------------------|---|
| Operating Temperature | -30°C to +60°C (-22°F to +140°F)  |
| Storage Temperature   | -55°C to +85°C (-67°F to +185°F)  |
| Mil Specs             | MIL810F Method 506.4 (Rain), MIL810F Method 509.4 Procedure 1 (Salt Fog), MIL810F Method 510.4 Procedure 1 (Dust), MIL810F Method 514.5 Procedure 1 Category 24 (Vibration), MIL810F Method 516.5 Procedure 1 (Vibration) |
| ESD                   | IEC / EN 61000-4-2  |
| IP Rating             | IP68  |
| Impact Grill          | 1.25 in (31.75 mm) Diameter Steel Ball Drop   |
| Work-When-Wet         | Yes   |

## SECONDARY AUDIO ACCESSORY

|            |  |
|------------|--|
| RLN4941_XL | 3.5 mm Xtra Loud Receive-Only Earpiece with Translucent Tube |
| AARLN4885  | 3.5 mm Receive-Only Earbud with Foam Cover                   |



# AUDIO

HEAR AND BE HEARD LIKE NEVER BEFORE

## SURVEILLANCE KITS



**IMPRES™**  
**Two-Wire Surveillance Kit, Beige**

PMLN6130



**IMPRES Over-the-Ear**  
**Two-Wire Surveillance Kit, Black**

PMLN6127



**IMPRES**  
**Two-Wire Surveillance Kit, Black**

PMLN6129



**Two-Wire Surveillance Kit**  
**With Translucent Tube, Black**

RLN5312 (Requires BDN6783)



**APX™ 3.5mm Threaded Audio**  
**Accessory Adapter**

BDN6783

## EARPIECES



**3.5 mm Extra Loud Receive-Only**  
**Earpiece with Translucent Tube**

RLN4941\_XL



**3.5 mm Receive-Only**  
**Earpiece with Covered Earbud**

AARLN4885

### Will APX accessories work with APX NEXT?

APX NEXT has the same audio accessory port as other APX radios. Some APX accessories, including surveillance kits, are certified and others are not. Batteries and single-unit chargers will be different. APX NEXT utilizes Bluetooth® 5.0 and the NFC Bluetooth standard. Therefore, MPP Bluetooth accessories will not be compatible. Please check with your technical sales representative for more details.

### Can you use Voice Control or Virtual Partner from an accessory?

The XV RSM is the only accessory with which Voice Control and Virtual Partner are accessible.





A close-up photograph of a Motorola APX Next radio and a flashlight tucked into a tactical gear pouch. The radio is black with a small orange button and the Motorola logo. The flashlight is also black with a textured grip. The pouch is made of olive green fabric with visible stitching. The background is dark and out of focus.

# CARRY

SECURE, EASY ACCESS

# HYBRID LEATHER CARRY CASE

SECURE, EASY ACCESS

## DETAILS

The professional elegance of formed leather complemented with a durable, impact resistant plastic unite to provide a never before seen carry solution for APX NEXT. Our hybrid leather carry case simplifies one handed device access without compromising device security so your hands are free and information is within reach. A quick connect belt loop swivel also allows you to easily disconnect and quickly retrieve your radio. A security strap inspired by gun holsters prevents the device from dislodging during operations, improving user confidence.

## KEY FEATURES

- Secure retention allows simple one hand device access
- Built-in audio ports enable you to leave your radio in the case for audio applications without degrading device transmit and receive performance
- Accommodates connection of the XV RSM



HYBRID LEATHER CARRY CASE



D bracket attached as sold



Removed D bracket allows Belt clips



NTN8266  
2.5" belt clip attached



PMLN7965  
3" belt clip attached

Standard clip slot present under D bracket



HYBRID LEATHER CARRY CASE - BACK VIEW  
(Swivel Belt Loop sold separately)

## PART NUMBER SPECIFICATIONS

|                   | Part Number | Use with Batteries               | Attachments (sold separately)  |  |
|-------------------|-------------|----------------------------------|--|--|
| Standard Capacity | PMLN7948    | NNTN9087                         | Swivel Belt Loop<br>2.5" - PMLN5407<br>2.75" - PMLN5408<br>3" - PMLN5409 | Belt Clip<br>2.5" - NTN8266<br>3" - PMLN7965 |
|                   |             | NNTN9216<br>NNTN9088<br>NNTN9217 |  |  |
| High Capacity     | PMLN7964    | NNTN9089<br>NNTN9090             |  |  |



# CLASSIC HOLSTER

SECURE, EASY ACCESS

## DETAILS

Lock down your APX NEXT radio with our classic holster. The innovative radio retention mechanism ensures your radio stays in place even in high pursuit, improving officer safety and securing your LMR investment.

## KEY FEATURES

- Ships in box with APX NEXT with the option to replace with the Hybrid Leather Carry Case
- Improved device retention compared to APX carry holsters
- Designed to enable device charging in the IMPRES 2 Multi-Unit Charger while secured using the 2.5" or 3.0" belt clip attachment



CLASSIC HOLSTER



CLASSIC HOLSTER - BACK VIEW  
WITH 3" BELT CLIP  
(sold separately - see page 12)



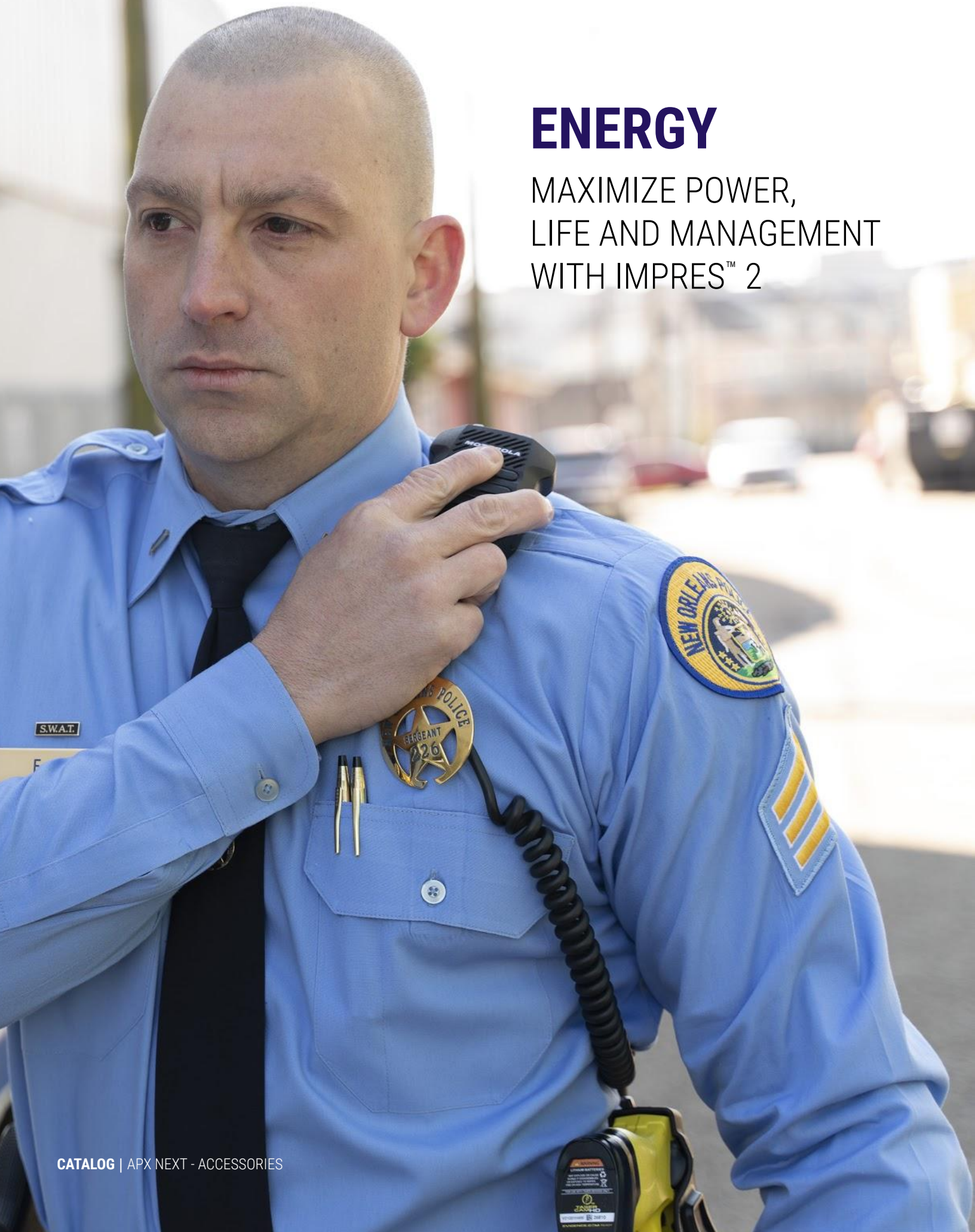
## PART NUMBER SPECIFICATIONS

Part Number

PMLN7947

# ENERGY

MAXIMIZE POWER,  
LIFE AND MANAGEMENT  
WITH IMPRES™ 2





# IMPRES 2 BATTERIES

## LONG LASTING LIFELINE

### SPECIFICATIONS

|                                | Standard Options                         |                                    | Standard HazLoc <sup>3</sup> |                                    |
|--------------------------------|--|------------------------------------|------------------------------|------------------------------------|
| <b>Part Number</b>             | NNTN9087                                 | NNTN9216                           | NNTN9088                     | NNTN9217                           |
| <b>Capacity</b>                | 3850 mAh                                 | 4400 mAh                           | 3850 mAh UL Div 2            | 4400 mAh UL Div 2                  |
| <b>Operating Temperature</b>   | -20C to +60°C (-4°F to +140°F)           |                                    |                              |                                    |
| <b>IP Rating</b>               | IP68 <sup>4</sup> APX NEXT System Rating |                                    |                              |                                    |
| <b>APX NEXT Operating Time</b> | 12 hrs <sup>5</sup>                      | 13.8 hrs <sup>5</sup>              | 12 hrs <sup>5</sup>          | 13.8 hrs <sup>5</sup>              |
| <b>Availability</b>            | Aftermarket                              | In-Box Order Option or Aftermarket | Aftermarket                  | In-Box Order Option or Aftermarket |

|                                | High Capacity                            | High Capacity HazLoc <sup>3</sup>  |
|--------------------------------|--|------------------------------------|
| <b>Part Number</b>             | NNTN9089                                 | NNTN9090                           |
| <b>Capacity</b>                | 5650 mAh                                 | 5650 mAh UL Div 2                  |
| <b>Operating Temperature</b>   | -30C to +60°C (-22 °F to +140 °F)        |                                    |
| <b>IP Rating</b>               | IP68 <sup>4</sup> APX NEXT System Rating |                                    |
| <b>APX NEXT Operating Time</b> | 18 hrs <sup>5</sup>                      |                                    |
| <b>Availability</b>            | In-Box Order Option or Aftermarket       | In-Box Order Option or Aftermarket |

### KEY FEATURES

- Built with highest energy density cells yet
- Backed by a 24-Month Capacity Warranty<sup>2</sup>
- 48 month workmanship warranty

For IMPRES 2 battery care tips, please visit  
<http://motorolasolutions.com/battery care>



STANDARD CAPACITY

HIGH CAPACITY

1. APX NEXT battery maintenance require IMPRES 2 charger solutions.
2. 24 month capacity warranty applicable only when battery is maintained with IMPRES 2 chargers
3. HazLoc: listed by UL to non-incendive standards: UL 121201 and CAN/CSA C22.2 No. 213-17 as safe for use in Class I, Division 2, Groups A,B,C,D; Class II, Division 2, Groups F,G; Class III Hazardous (Classified) Locations.
4. IP68: APX NEXT radio with battery attached submerged in 2 meters of water for 4 hours
5. APX NEXT operation life based on land mobile radio 5/5/90 use profile, touchscreen: on 1hr, SmartConnect: 30 mins, LTE: DRX Idle, GPS: Off, Bluetooth: Off, WiFi 80/20, NFC: Off, RSM connected

# IMPRES 2 CHARGERS

## MAXIMIZE POWER, LIFE AND MANAGEMENT

APX NEXT requires IMPRES 2 charger technology available in single unit (SUC) and multi unit (MUC) charger configurations. Owners of an APX IMPRES 2 multi unit charger (NNTN8844) may convert one or more APX pockets with the field installable APX NEXT pocket.

### IMPRES 2 MULTI-UNIT CHARGER

Charge up to six APX NEXT batteries simultaneously for more efficiency.

- IMPRES 2 charging algorithms increase charge cycles up to 60% over non-IMPRES
- Six pocket displays to view enhanced diagnostics<sup>1</sup>
- Disable calibration mode<sup>2</sup> or enable long term storage mode<sup>3</sup>
- Optional wall mount kit NLN7967 available
- California Energy Commission (CEC) energy efficiency compliant

### IMPRES 2 SINGLE-UNIT CHARGER

Charge your battery by itself or while it's attached to the radio.

- Advanced IMPRES 2 charging algorithms
- Ability to disable calibration mode via mode selection switch
- California Energy Commission (CEC) energy efficiency compliant

### APX NEXT POCKET for APX MULTI-UNIT CHARGER

- End user field upgradeable
- Create APX NEXT/APX mixed device multi-unit charger

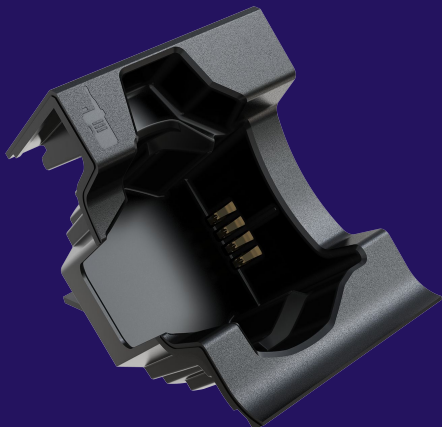
### SPECIFICATIONS

| Product   | Part Number | Dimensions                                   | USB Charging Ports |
|---|-------------|--|--------------------|
| IMPRES 2 Multi-Unit Charger                         | NNTN9115    | 7.8 x 17.5 x 10.3 in<br>(197 x 445 x 262 mm) | 6                  |
| IMPRES 2 Single-Unit Charger                        | NNTN9199    | 2.8 x 3.9 x 4.8 in<br>(70 x 100 x 123 mm)    | 2                  |
| APX NEXT Pocket for<br>(Only for use with NNTN8844) | NNTN9212    | N/A  | N/A                |

1. IMPRES 2 MUC display diagnostics: battery day 1 available capacity, current available capacity, rated capacity, part number, serial number, use cycles
2. Motorola recommends a calibration procedure be performed on an IMPRES 2 battery every 28 days to maintain best APX NEXT device fuel gauge accuracy
3. Long term storage mode keeps a battery in a selectable 50% or 70% state of charge.



IMPRES 2 MULTI-UNIT CHARGER



APX NEXT POCKET FOR  
IMPRES 2 MULTI-UNIT CHARGER



IMPRES 2 SINGLE-UNIT CHARGER





For more information, please visit  
[motorolasolutions.com/apxnext](https://motorolasolutions.com/apxnext)

